



PELI
BIO THERMAL™



COOLPALL™
VERTOS



BULK SHIPPING SYSTEMS

CoolPall™ Vertos is the next generation of high performance bulk shipping systems from Peli BioThermal™. This durable bulk shipper has been designed and tested with the ability to be flat-packed, modular, easy and quick to assemble.

WHY CHOOSE COOLPALL™ VERTOS?

Ease & Speed of Use

- Reduced number of coolants with all-year packout for simplicity in packing
- Accepts full pallets of product for operational speed and simplicity
- Ergonomic design features innovative interlocking components for quick and easy assembly
- Flat-packed height minimises in-bound distribution costs and saves warehouse space
- Modular components reduces inventory and ease in ordering spare parts

Proven robust performance

- Strict temperature control within demanding global environments
- High density molded materials for thermal and mechanical robustness, yet still light weight
- Best-in-class payload to volume ratio, possibly lowering transport costs

COOLPALL™ VERTOS

DURATION

120+ Hours

TEMPERATURE

2°C to 8°C

15°C to 25°C

VOLUME

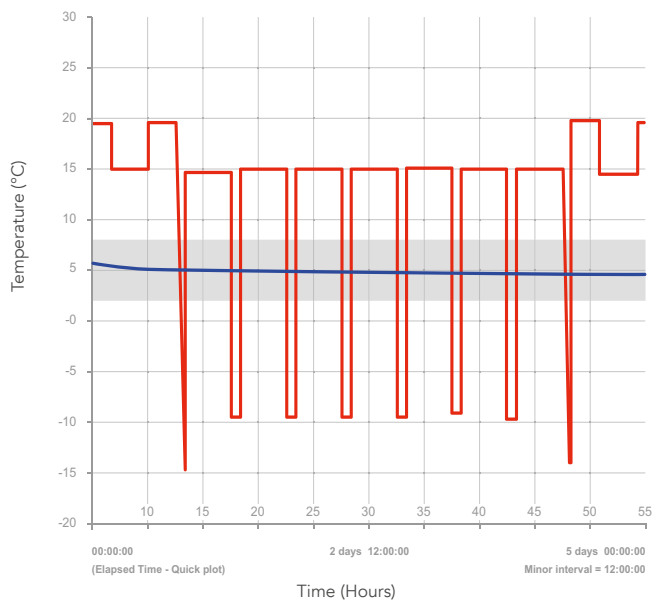
Euro & ISO Pallet sizes,
volumes up to 3175L

COOLPALL™ VERTOS PRODUCT SPECIFICATION

Product	TEMP	Exterior Dimensions - mm	Interior Dimensions - mm	Payload Volume (L)	Tare Weight - kg
Vertos 1/4 PMC	2-8°C	1195 x 1565 x 1565	927 x 1296 x 1150	1382	235
Vertos 1/4 PMC	15-25°C	1195 x 1565 x 1595	927 x 1296 x 1150	1382	235
Vertos ISOPAD	2-8°C	1396 x 1565 x 1595	1127 x 1296 x 1150	1680	235
Vertos ISOPAD	15-25°C	1396 x 1565 x 1595	1127 x 1296 x 1150	1680	235
Vertos 1/2 PAG	2-8°C	2195 x 1565 x 1595	1927 x 1296 x 1150	2872	323
Vertos 1/2 PAG	15-25°C	2195 x 1565 x 1595	1927 x 1296 x 1150	2872	323
Vertos 1/2 PMC	2-8°C	2395 x 1565 x 1595	2130 x 1296 x 1150	3175	338
Vertos 1/2 PMC	15-25°C	2395 x 1565 x 1595	2130 x 1296 x 1150	3175	338

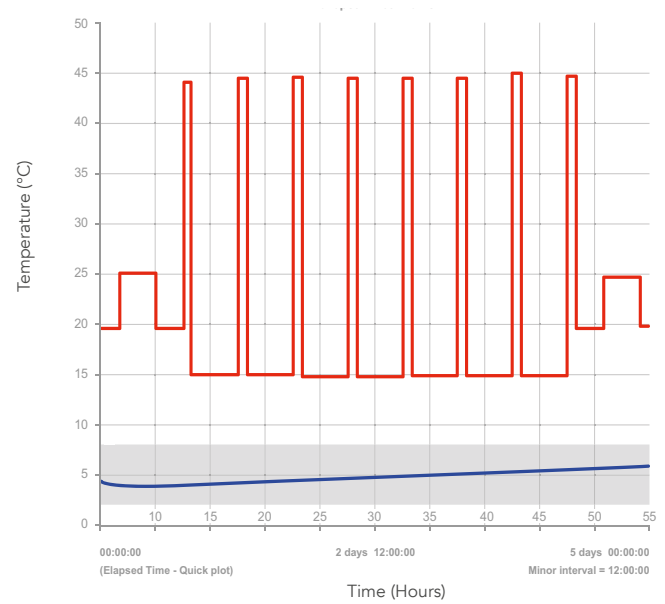
EUROPEAN COLD PROFILE

Peli BioThermal Profile -
CoolPall™ Vertos ISOPAD +2°C to +8°C



EUROPEAN HOT PROFILE

Peli BioThermal Profile -
CoolPall™ Vertos ISOPAD +2°C to +8°C



Interlocking high density construction

Inspection hatch
Minimising the potential for excursions during
customs inspection

FOR MORE INFORMATION ABOUT PELI BIOTHERMAL PRODUCTS, PLEASE CONTACT:

EMEA OFFICE - INFOEMEA@PELIBIOTHERMAL.COM T: +44 (0)1525 243 770

AMERICAS OFFICE - INFOAMERICAS@PELIBIOTHERMAL.COM T: +1(763) 412-4800 TOLL FREE US: T: +(877) 537-9800

ASIA OFFICE - INFOASIA@PELIBIOTHERMAL.COM T: +65 6681 0095

PELIBIOTHERMAL.COM

ISO17025, ISO9001-2008 Accredited

Golden Hour™, TIC™, Crêdo™, Crêdo Cube™, Crêdo Xtreme™, Crêdo Duracube™, Crêdo ProMed™, Sherpa Systems™, CoolGuard™ and CoolPall™ are registered trademarks of Pelican Products Inc., its subsidiaries and / or affiliates



©2021 Peli BioThermal Ltd all rights reserved