



**PELI**  
**BIO THERMAL™**



# INSULCAP® THERMAL COVERS

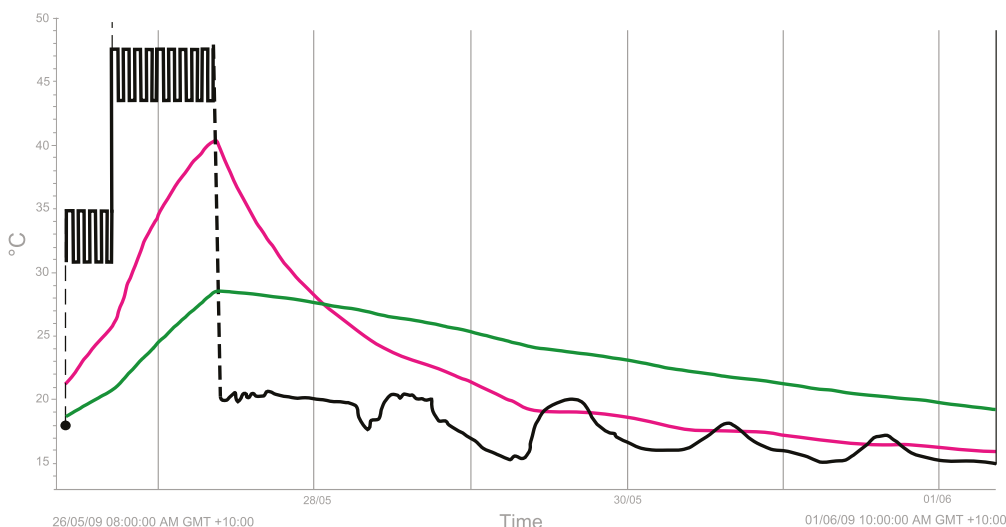
## INSULCAP THERMAL PALLET COVERS

- Thermal barrier systems enclose the palletised product to provide an protected thermal environment, that passively manages product temperature during storage and transport. An InsulCap® cover is constructed from a range of thermal barrier materials; innovations designed by Wilpak Group International.

## WHY CHOOSE INSULCAP THERMAL COVERS?

- A range of custom InsulCap® pallet covers; InsulPrime, InsulGold, InsulPlatinum Plus
- Our InsulPlatinum® Plus barrier is a heavy duty large air cylinder material which offers maximum protection for temperature sensitive goods, while our InsulPrime® barrier is a general-purpose material at a affordable price.
- Exclusively Distributed Globally by Peli BioThermal

— Insulcap® Protected Drum °C  
— Without Insulcap® Insulation °C  
— Test Conditions/Oven Teme °C



**EXCELLENT  
THERMAL  
PROTECTION**

**TOUGH THERMAL  
BARRIER  
MATERIAL**

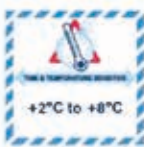

**LIGHTWEIGHT  
PALLET COVER  
SYSTEM**

**CUSTOM CUT  
PROFILES  
AVAILABLE  
IN 150MM  
INCREMENTS**

## INSULCAP THERMAL BARRIER MATERIAL PROPERTIES

Material	Reflective Barrier	Air cylinder	Barrier Thickness	Thermal Rating
InsulPlatinum Plus	2 (foil external/internal)	25+mm	12mm	5 Maximum
InsulGold	2 (foil external)	25+mm	10mm	4 High
InsulPrime	1 (foil external)	10mm	5mm	1 Affordable

## THERMAL BARRIER MATERIAL

REQUIRED TEMPERATURE RANGE OF GOODS		EXTERNAL EXPOSURE TEMPERATURE	EXPOSURE DURATION							
			Hrs Mins	1 60	2 120	4 240	6 360	8 480	8+ 480+	
<b>2°C</b> <b>8°C</b>  Chilled	less than -10°C								Performance Varies Based on Application	
	-10°C to 0°C									
	0°C to 10°C		INSULGOLD							
	10°C to 20°C									
	20°C to 30°C		INSULPLATINUM							
	30°C to 40°C						PLUS			
<b>15°C</b> <b>25°C</b>  Ambient	less than -10°C							Performance Varies Based on Application		
	-10°C to 0°C		INSULPLATINUM							
	0°C to 10°C						PLUS			
	10°C to 20°C									
	20°C to 30°C		INSULGOLD							
	30°C to 40°C									

FOR MORE INFORMATION ABOUT PELI BIOTHERMAL PRODUCTS, PLEASE CONTACT:

EMEA OFFICE - [INFOEMEA@PELIBIOTHERMAL.COM](mailto:INFOEMEA@PELIBIOTHERMAL.COM) T: +44 (0)1525 243 770

AMERICAS OFFICE - [INFOAMERICAS@PELIBIOTHERMAL.COM](mailto:INFOAMERICAS@PELIBIOTHERMAL.COM) T: +1(763) 412-4800 TOLL FREE US: T: +(877) 537-9800

ASIA OFFICE - [INFOASIA@PELIBIOTHERMAL.COM](mailto:INFOASIA@PELIBIOTHERMAL.COM) T: +65 6681 0095

[PELIBIOTHERMAL.COM](http://PELIBIOTHERMAL.COM)

ISO17025, ISO9001-2008 Accredited

Golden Hour™, TIC™, Crêdo™, Crêdo Cube™, Crêdo ProEnvision™, Crêdo Xtreme™, Crêdo Duracube™, Crêdo ProMed™, Sherpa Systems™, CoolGuard™ and CoolPall™ are registered trademarks of Pelican Products Inc., its subsidiaries and / or affiliates



©2021 Peli BioThermal Ltd all rights reserved